

Product specification sheet

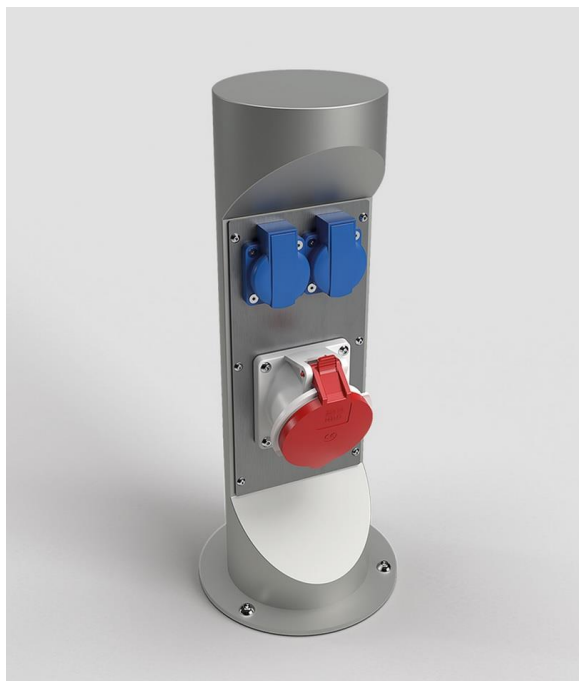
Energy column

Designation:

Type:

STAKOHOME-ES-4	2x power socket 230V, 1x 400V CEE 5/16A or 5/32A
STAKOHOME-ES-4	2x power sockets 230V, 2xRJ45 Cat.6a
STAKOHOME-ES-4	1x CEE 5/16A 400V/6h or CEE 5/32A 400V/6h
STAKOHOME-ES-4	6x power sockets 230V

Other types (different instrumentation) upon request., is possible



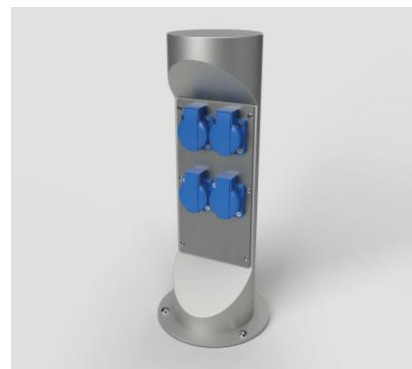
Innovative - Stable - Modern Design!

Energy column for outdoor installation. Cable inlet from below. The V2A stainless steel body is sprayed with glass beads. The plate under the plugs made from stainless steel. Protection class is IP 54/44 (depending on the type of cover of plugs).

Sockets 230V can be plastic in color black or blue, DATA (RJ45) yellow.

For an extra charge, sockets can be equipped with stainless steel covers (fewer sockets).

Dimensions: Ø129 x 438 mm (height)



The electrical connections must be carried out by a professional company/person with necessary qualifications.

Note: Printing errors and alterations reserved.

stakohome[®]

Stakohome Network s.r.o.
IČ: 27213064, DIČ: CZ27213064
tel.: +420 226 517 522
fax: +420 226 517 379
stakohome@stakohome.cz
www.stakohome.cz
www.inteligentni-byt.cz

Fakturační adresa: Podnikatelská 565, 190 11 Praha 9, Běchovice
Showroom a doručovací adresa: Aloisovská 934/8, 198 00 Praha 9, Hloubětín

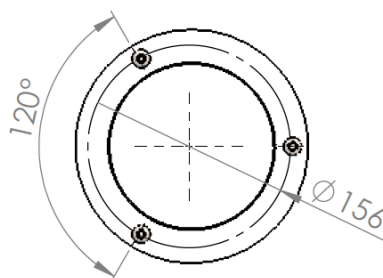
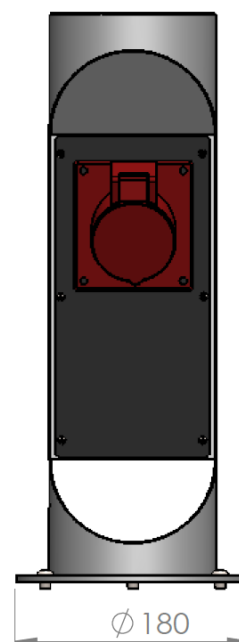
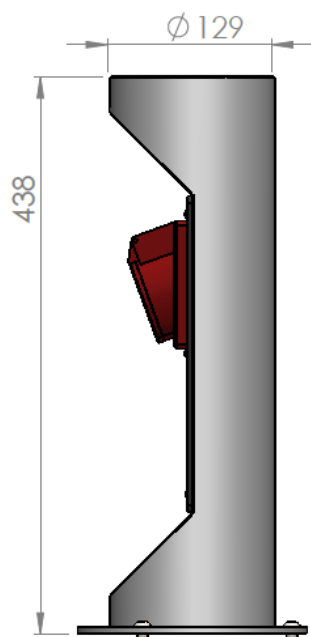
Technical sheet

Energy column

Designation:
Type:

STAKOHOME-ES-4	2x power socket 230V, 1x 400V CEE 5/16A or 5/32A
STAKOHOME-ES-4	2x power sockets 230V, 2xRJ45 Cat.6a
STAKOHOME-ES-4	1x CEE 5/16A 400V/6h or CEE 5/32A 400V/6h
STAKOHOME-ES-4	6x power sockets 230V

Other types (different instrumentation) upon request., is possible


stakohome®

Stakohome Network s.r.o.
 IČ: 27213064, DIČ: CZ27213064
 tel.: +420 226 517 522
 fax: +420 226 517 379
stakohome@stakohome.cz
www.stakohome.cz
www.inteligentni-byt.cz

Fakturační adresa: Podnikatelská 565, 190 11 Praha 9, Běchovice
 Showroom a doručovací adresa: Aloisovská 934/8, 198 00 Praha 9, Hloubětín